

RICE

(Reducing Industrial Carbon Emissions)

Project Description

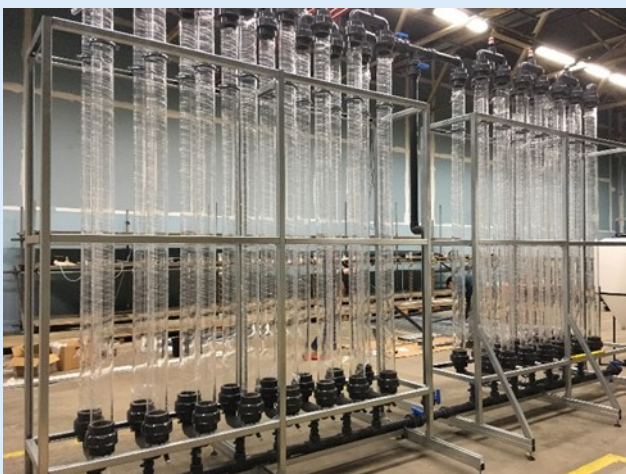
RICE is led by the Energy Safety Research Institute (ESRI) at Swansea University, in partnership with Sustainable Environment Research Centre (SERC) and University of South Wales.

Its goal is to test how CO₂ produced from heavy industrial processes can be innovatively used to make high value products and industrially important chemicals. Technologies will also explore the production of green hydrogen, which can be used in many ways to reduce our carbon footprint.

It aims to deliver transformational change through the translation of innovative processes to reduce Wales' CO emissions and decrease consumption of energy & raw material by heavy industry.

Geographical Coverage

The project will benefit the West Wales and the Valleys programme area, predominantly in the South West.



Assembly of one of the bioreactors which will be used to grow algae which will consume industrial CO₂ emissions

Specific Targets

- Amount of research funding secured - £9.2 million
- No. improved research infrastructure facilities - 1
- No. researchers in improved research infrastructure facilities - 61
- No. new researchers in supported entities - 29

Contact Details

Prof Andrew Barron
Energy Safety Research Institute,
Swansea University Bay Campus,
ESRI Building,
Fabian Way,
Crymlyn Burrows,
Swansea
SA1 8EN

✉ A.R.Barron@swansea.ac.uk

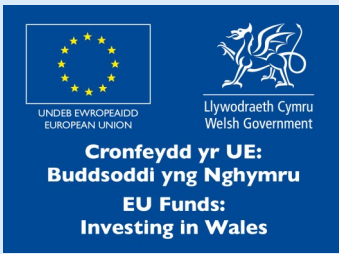
☎ 01792 513033

🌐 www.RICE.Cymru

🐦 [@RICE_Cymru](https://twitter.com/RICE_Cymru)

📺 [Rice Cymru](https://www.youtube.com/channel/UC...)

▶ [Rice Cymru](https://www.youtube.com/channel/UC...)



RICE

(Lleihau Allyriadau Carbon Diwydiannol)

Disgrifiad

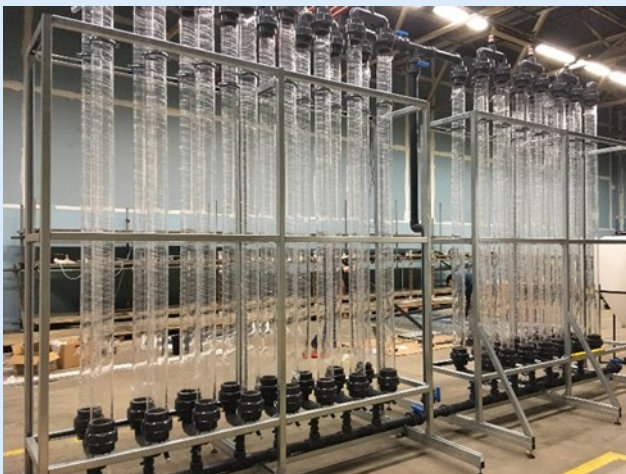
Arweinir RICE gan y Sefydliad Ymchwil Diogelwch Ynni (ESRI) ym Mhrifysgol Abertawe, mewn partneriaeth â Canolfan Ymchwil Amgylchedd Cynaliadwy (SERC) a Phrifysgol De Cymru.

Ei nod yw profi sut y gall CO₂ a gynhyrchir o brosesau diwydiannol trwm gael ei ddefnyddio'n arloesol i wneud cynhyrchion gwerth uchel a chemegau sy'n bwysig yn ddiwydiannol. Bydd technolegau hefyd yn archwilio cynhyrchu hydrogen gwyrdd y gellir ei ddefnyddio mewn sawl ffordd i leihau ein hól troed carbon.

Ei nod yw cyflawni newid trawsnewidiol drwy drosi prosesau arloesol er mwyn lleihau allyriadau CO Cymru a'r defnydd o ynni a deunydd crai gan ddiwydiannau trwm.

Ardal Ddaearyddol

Bydd y prosiect o fudd i ardal rhaglen Gorllewin Cymru a'r Cymoedd, yn y De-orllewin yn bennaf.



Targedau Penodol

- Swm y cyllid ymchwil a sicrhawyd - £9.2m
- Nifer y cyfleusterau seilwaith ymchwil sydd wedi eu gwella - 1
- Nifer yr ymchwilwyr mewn cyfleusterau seilwaith ymchwil sydd wedi eu gwella - 61
- Nifer yr ymchwilwyr newydd mewn endidau a gynorthwyr - 29

Manylion Cyswllt

Yr Athro Andrew Barron
Y Sefydliad Ymchwil Diogelwch Ynni,
Campws y Bae Prifysgol Abertawe,
Adeilad yr ESRI
Ffordd Fabian,
Twyni Crymlyn,
Abertawe,
SA1 8EN

✉ A.R.Barron@swansea.ac.uk

☎ 01792 513033

🌐 www.rice.cymru/welsh_index

🐦 [@RICE_Cymru](https://twitter.com/RICE_Cymru)

📺 [Rice Cymru](#)

▶ [Rice Cymru](#)

Cydosod un o'r bioadweithyddion a fydd yn cael ei ddefnyddio i dyfu algâu a fydd yn llyncu allyriadau CO₂ diwydiannol